



INNOVATIVE PACKAGING SUPPLY & LOGISTICS

Packaging made **personal**

PART OF





PACKAGING MADE PERSONAL, FOR OVER **20 YEARS...**

Network Packaging is an innovative protective packaging distributor. For over 20 years we have offered solution focused packaging teamed with a personal approach – putting our customers at the heart of everything we do.

In 2014, we became part of the UK's largest packaging distributor, Macfarlane Packaging.

As a group we pride ourselves on being able to offer you a wide range of protective packaging products, but we can offer you much, much more... We can support your packaging operation at every stage, from stock management to packaging design.

Our experts can help you to increase efficiency, save time, lessen your impact on the environment and reduce costs. We'll do all this while improving the protection of your products in storage and transit.



"As a supply chain specialist servicing multiple markets, it's critical that the packaging we use for our customers helps us dispatch product quickly and easily, while effectively controlling costs so we deliver good value. Working with Network Packaging to source our packing materials has enabled us to do this."

Their holistic approach to packaging helped identify ways to increase efficiency, whilst lowering our packaging costs. They've been incredibly helpful since we started working with them, and the team are always willing to find a solution that improves our operation"

Oakland International



Our Group:

PART OF **MACFARLANE
PACKAGING**



smartpack

PACKAGING REVIEW

90% of your packaging costs could be hiding...

There's a lot more to the cost of your packaging than meets the eye. In fact, **90% of packaging costs are hidden in six areas**, behind the basic unit price you pay. When we talk about costs, we don't just mean your bottom line. **Packaging can also affect your environmental impact and your operational efficiency.**

We'll help you drive down your costs with our Smartpack Packaging Review

Packaging solutions generated by a Smartpack review will be tailored to your company.

The recommendations we make will help improve operational efficiency, save money, enhance customer experience, and support your sustainability goals.



Collaboration

We'll be your partner, creating shared goals & objectives. Your priorities will be ours.

Understanding

We'll develop an in-depth understanding of your company, your people, your processes, and your packaging.

Innovation

We'll use the information we've gathered to develop intelligent packaging solutions that are tailored to you.

Results

Our solutions will deliver tangible results. We'll help you cut costs, save time, reduce waste & enhance your customer experience.

Continual Improvement Plan

We'll commit to improving your packaging year on year, with a Continual Improvement Plan.

Making a material difference

Choosing the right packaging materials can make a big difference to your environmental impact and customer perception.

So, having a conversation about your packaging materials will always be an important part of a Smartpack review. We can help you to reduce the use of materials you'd like to use less of and switch to sustainable alternatives if appropriate. We'll do this without compromising on product protection.



Revealing where your packaging costs are hiding...

As well as looking at your packaging materials, during a Smartpack review our team will help you reveal hidden costs.

We've spent decades innovating and perfecting packaging for a wide range of markets. Packaging that is strong, light, space efficient and, increasingly, environmentally friendly.

In doing so we have isolated six hidden costs that have the biggest impact on most packaging operations. They are:

Storage



Reclaim space & reduce costs

Reduce the amount of packaging stock held at your site, free up your valuable space and improve cash flow by letting us store your packaging.

Using a stock holding service combined with just-in-time delivery also puts a stop to the inevitable wastage of slow stock caused by obsolescence or damage over time, making your supply chain more sustainable.



Transport



Lower transport costs & limit your impact on the environment

Optimised packaging that's lighter and smaller can help you cut transport costs and reduce your CO₂ emissions.

Well designed solutions can help you plan your pallets & transport more effectively too, further shrinking your carbon footprint.



Damages & Returns



Don't let damages & returns cost you

Replacing damaged goods and accounting for reverse logistics can be expensive. Plus, every time your product is returned the carbon cost of a transaction doubles.

We can help with corrective solutions. Fit for purpose packaging will reduce damages, enhance customer experience and save you money.



Admin



Streamline your purchasing, save time & reduce costs

The simplicity of a single supplier...

Consolidating your packaging materials with a single supplier who can deliver all your requirements can free up your time, reduce hassle, and lower your labour costs.



Productivity



Work smarter, faster & increase productivity

Even the smallest bottleneck can impact your efficiency.

We'll review your entire operation. Analysing processes, the design of your materials, your packaging stations, labour vs. automation, your warehouse and its layout, and even your logistics. Our smart solutions will deliver speed, accuracy and optimum productivity.



Customer Experience



A customer experience that delivers the right impression

Good packaging will protect your reputation, as well as your products. Managing customer experience whilst maintaining costs is increasingly complex. But a positive impression can help you leverage customer loyalty and packaging is vital to creating that experience.

We can deliver solutions that are easy to open, recyclable, protect goods and reflect the value of your brand to give customers a memorable experience, for the right reasons.



SUSTAINABILITY AND PACKAGING

Helping you make an informed choice

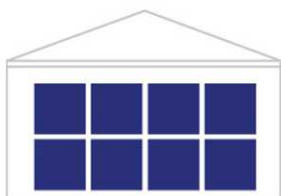
Packaging has an important role in product protection, but we must design and use it properly. The right packaging can significantly reduce waste throughout supply chains.

At Network Packaging and Macfarlane Group we are committed to reducing the impact of our activities on the environment and assisting you, our customer, by encouraging the use of sustainable materials wherever practical. Packaging is an essential commodity for most businesses, and we recognise our responsibility to help you make an informed choice to use it in a sustainably sensitive manner.



The right pack can have a big impact

Packaging must be carefully planned from the start to reduce waste in the supply chain. Properly designed packaging provides maximum protection with minimal use of material.



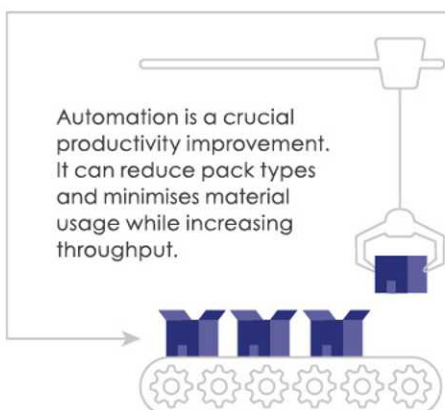
The right choice of packs, and JIT delivery, eliminates natural wastage and the environmental cost of maintaining storage space.



Lighter, smaller packs provide pallet optimisation. This can reduce the number of journeys per volume of goods and reduce load weight contributing to CO₂ emission reduction.



Better pack design reduces damages. Each time damaged goods are replaced the carbon cost of a transaction doubles.



Automation is a crucial productivity improvement. It can reduce pack types and minimises material usage while increasing throughput.



Most of the packaging that can deliver these supply chain benefits is fully recyclable or reusable, which more and more customers are demanding.

Our Steps to Sustainability

We know that packaging plays a huge part in CSR and sustainability goals for businesses, with many looking to reduce packaging use and minimise material waste.

By taking our Steps to Sustainability, we can help you reduce your material use and carbon footprint, as well as minimise waste throughout the supply chain.

1 Talk to us about your sustainability goals & objectives

We'll identify key environmental costs in your business and help reduce or eliminate them

2 Identify sustainable packaging alternatives

We'll recommend opportunities to reduce, reuse or recycle - swapping to sustainable solutions and minimising material use

3 Assess the knock-on effect of packaging

We'll address the possibility of reducing shipment weights, damages and returns, and optimise transport to lower emissions

4 Illustrate and report savings

We'll help you calculate and report reductions so you can share the improvements with customers and stakeholders

At Network Packaging and Macfarlane Group we are committed to reducing the impact of our activities on the environment and assisting you, the customer, by encouraging the use of sustainable resources wherever possible.

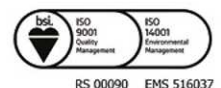
We will help you:

1. Use the minimum amount of packaging material needed, eliminating excess where possible.
2. Deploy the most efficient packaging products available.
3. Reuse packaging materials wherever possible.
4. Use packaging that is both recycled and recyclable and recycle packaging material whenever possible.

Macfarlane Group certifications and accreditations:



The mark of
responsible forestry



RS 00090 EMS 516037

PACKAGING SOLUTIONS

Over 80% of the packaging we supply is bespoke

We can create packaging solutions that are tailored to you, as well as supply you packing materials from our extensive stock range.



"When we created our artisan doughnut range, we wanted to focus on them being a little different and standing out. So, when it came to our packaging, we needed packing materials that delivered the wow-factor just like our doughnuts.

The team at Network Packaging have listened to what we need and developed a box for our nationwide delivery service that reflects our brand and protects our doughnuts. Our account manager is always there to provide the advice and support we need, so we know our packaging is in good hands."

Planet Doughnut

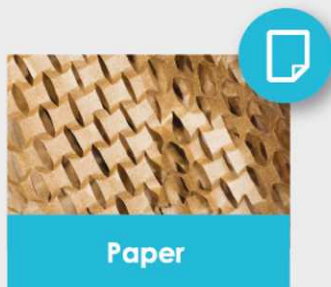




As we're part of the UK's largest packaging distribution group, we can give you access to the widest range of quality packaging materials, sourced from over 650 global supply partners.

- Choose from the latest packaging innovations
- You get the best value and highest quality
- Solutions that match your needs exactly

Whatever packaging you need, **we've got it**



PACKAGING AUTOMATION

Drive up your productivity and reduce costs across your operation

Automation can dramatically improve the productivity across all areas of your packaging operation, from packing itself to areas like storage and transport. It can also provide environmental benefits and even help improve your customer experience.

You can automate almost any packaging process and automation can be integrated on almost any scale. A simple automated tape machine could have a surprisingly big impact on your total packaging cost or if you're in a high-demand operation you could use conveyors and on demand systems for ultimate efficiency.

The benefits of automation

- Improve productivity & gain more control
- Minimise transport weight & shipping costs
- Optimise labour costs
- Save storage space
- Maximise protection & reduces damages
- Cut material waste & environmental impact
- Enhance customer experience



Solutions that can be automated :



Boxing



Bagging



Void fill & cushioning



Taping & labelling



Conveyors



Strapping



Shrink wrapping



Stretch wrapping



Scan for
automation
demo videos

EMAIL CONTACT@NETWORKPACK.CO.UK
TO ASK FOR AN AUTOMATION CONSULTATION

INNOVATIONLAB

Our Innovation Lab can deliver your ideal packaging solution

As part of the Macfarlane Group, Network Packaging can offer you access to the ground-breaking Innovation Lab.

The facility brings together the latest packaging design, sampling, and testing technology under one roof. At the Innovation Lab our experts will help speed up the process of finding the packaging solution that's right for you.

- See how packaging affects your product's journey
- We can bring your brand to life with packaging
- You can discover where your packaging costs are hiding
- Your optimised packaging solutions will deliver savings for your business and the environment

Interactive Environment & Cutting-Edge Facilities

- Interactive touch screen technology & conferencing facilities
- The latest design software
- State of the art printers and cutting tables
- A fully equipped packaging show room furnished with the latest innovations from our supply base

Real-Time Virtual Design & Prototyping

- Specialist cloud-based software enables us to create packaging designs virtually in real-time
- Enables remote working for customers and colleagues when an in-person visit isn't possible

Production Quality Sampling

- See your brand come to life on a range of materials
- ED UV digital flatbed printer replicates production print finishes on your chosen packaging materials

Industry Standard Testing

- Investing in testing equipment means your packaging's performance can be validated to industry standards



Scan to access a
virtual tour of the
Innovation Lab

LEARN MORE ABOUT THE INNOVATION LAB
NETWORKPACK.CO.UK/INNOVATION-LAB





Putting you in control of your packaging

Simplicit.e is our online e-trading platform. It supports 24-hour order placement, multi-sited ordering, order authorisation and reporting, which all simplifies how you order and manage your packaging.



Simplicit.e makes things easy for you

Evaluating usage helps with future budgeting and you can track or adjust orders with ease. Simplicit.e can even be interfaced with your system and configured to your way of working.

Simplicit.e supports multi-site operations and remote working

Simplicit.e is a flexible system that can work in a way that suits your business. It can load products to match different sites or product lines. It's also accessible from any location, supporting remote working.

Simplicit.e lets you control access

Different users within your business can be given different levels of access to manage how they purchase packaging and how much they can spend.

Simplicit.e helps you control costs and reduce waste

Simplicit.e generates a full suite of reports to help you monitor spend and usage. You can also download waste and unused packaging reports, helping fine tune your inventory and reduce admin.

What our customers say about **simplicit.e**

"Simply put, Simplicit.e saves us time and has made our lives easier when it comes to packaging. The system is really user-friendly and the reporting suite helps us with admin like forecasting and managing invoices at the end of each month. Being able to adjust orders and deliveries also helps us adapt quickly and make sure we've got the right packaging at the right time."

Walls & Floors



Scan to find out more about Simplicit.e

ASK US ABOUT OPENING A SIMPLICIT.E ACCOUNT

SIMPLICIT.E IS A 24/7 ONLINE ORDER MANAGEMENT SYSTEM FOR BUSINESSES OF ALL SIZES. IT'S EASY TO USE, COMPLETELY FREE AND WILL SAVE YOU AND YOUR COLLEAGUES TIME, MONEY, AND HASSLE. EMAIL CONTACT@NETWORKPACK.CO.UK TODAY TO OPEN A SIMPLICIT.E ACCOUNT

ACCOUNT MANAGEMENT

Committing to the continual improvement of your packaging

When you work with Network Packaging, you'll be given a dedicated account manager whose role will be to make sure you're always getting the most out of your packaging.

Developing a partnership

For us, it's not just a case of simply acting as your packaging supplier. We want to be your strategic partner and build a relationship that will last years.

Your account manager will get to know your business inside and out, working closely with you to make sure we have an in-depth understanding of your packaging needs.

Supporting you everyday

We believe in packaging made personal, so your account manager will be there to support you day in and day out. We'll keep in touch with you as often as you like and make sure we catch up with you regularly.

You can also expect your account manager to visit your site and support you with packaging inventory management.

Creating a Continual Improvement Plan

As your business evolves, so will your packaging needs and we'll be there every step of the way. This is why we'll provide you with a Continual Improvement Plan for your packaging.

What does this involve?

When we create your Continual Improvement Plan, you'll have consultation with your account manager who will ask you a range of questions. These will help us identify where we can work together to make improvements and will cover several topics:

- **Your business, and any goals or priorities**
- **Any feedback you have for us as your packaging partner**
- **How your packaging is performing – including the material and the six hidden packaging costs**

A personalised plan for your business

You'll be given a physical copy of your company's personalised Continual Improvement Plan. Each plan is different, but you can expect it to include:

- **Our findings from any review meetings with you**
- **Your packaging objectives & goals**
- **Our recommendations**
- **Suggested implementation timelines**
- **Examples of potential & actual savings**

Your plan will be organic, developing and growing as we agree and implement recommendations or suggest new innovations.



STOCK MANAGEMENT

Our warehouse becomes your warehouse

If you're short of space and want to ensure you have a continual supply of packaging materials, our stock management service is for you. We can store your packaging goods in a clean, safe environment and deliver exactly what you need, precisely when you need it.

As part of our warehousing services, we can also manage your packaging inventory for you. We'll make sure you always have enough on site, with on-demand stock in our warehouse. All your packaging will be produced and delivered just-in-time to satisfy your requirements.

- No compromise on supply
- Minimise stock holding and release storage space
- Improve cash flow – only pay for what you need
- Ensure the quality of your packaging materials

Centrally based to serve the Midlands:



4 Warehouses
totalling
57,000 sqft



4,000 Pallet spaces
for storage



Fleet of dedicated
delivery vehicles



LOGISTICS & DELIVERY

Efficient deliveries with thought for the environment

Based centrally in the Midlands, the Network Packaging distribution centre is well connected to core transport links to make sure you get your packaging on time!

Our fleet consists of vehicles ranging from 3 tonne to 40ft articulated lorries that make thousands of deliveries each year in the Midlands. We can also access our group's national transport network to make sure you have what you need, throughout the UK.

Network Packaging and Macfarlane Group are committed to proactive sustainability and environmental practices. This means all our vehicles feature clean energy technology and we plan deliveries to minimise fuel use and emissions.

- Just-In-Time production & delivery of your packaging
- Dedicated fleet for the Midlands
- National transport network to deliver your packaging UK-wide
- Environmentally conscious delivery planning



Find out more
about our Logistics
& Delivery services

TO ASK US ABOUT OUR LOGISTICS & DELIVERY SERVICES
EMAIL CONTACT@NETWORKPACK.CO.UK





INNOVATIVE PACKAGING SUPPLY & LOGISTICS

T: 01902 496666 | E: contact@networkpack.co.uk | W: networkpack.co.uk

Network Packaging® Unit 5, Lanesfield Drive, Spring Road Industrial Estate, Ettingshall, Wolverhampton WV4 6UA